



A new year for the Kansas Breastfeeding Coalition

Greetings! I am honored and humbled to serve as the new Chairperson for the Kansas Breastfeeding Coalition (KBC). As we welcome new members to the KBC Board, we are also thrilled to begin our journey as a coalition with Brenda Bandy as Executive Director. What this means to YOU, our members, is that our coalition is growing and thriving.

KBC Mission: To improve the health and well-being of Kansans by working collaboratively to promote, protect and support breastfeeding.

KBC Vision: Breastfeeding is normal and supported throughout Kansas.



Your Board is committed to ensuring that the KBC activities align with the KBC Vision that “Breastfeeding is normal and supported throughout Kansas”. As you read the update, you will discover how YOUR Kansas coalition is working toward that vision. We are continually exploring opportunities to achieve our vision, and as a coalition we are advocating for our families that they receive the best breastfeeding education and support our communities can provide. I look forward to this year!

Thank you,
Jolynn Dowling (Jo)
2017 Chair, Kansas Breastfeeding Coalition

KBC Membership - Renew now for 2017!

The KBC Membership year is February of the current year - February of the next year. If you attended the October 14, 2016 Kansas Coalitions Conference, your membership is active until February 2018. We do not send individual member renewal notices, so now is the time to renew your membership for 2017 at ksbreastfeeding.org/join/.

Why should someone join the KBC? For only \$10 you get up to date information about Kansas' breastfeeding events and efforts. Members receive e-mail notices of available grants, upcoming KBC meetings, meeting minutes (past minutes available by request) and the bi-monthly KBC Update. Members are also eligible to serve on the Board of Directors and vote at general KBC meetings. A strong membership also helps us as we request funds for various projects and initiatives.



Plant a seed (of an idea)...

It is a new year and a new opportunity to improve the health and well being of Kansans!

This issue of the KBC Update features a variety of **actions items in red**. We challenge you to select ONE (or two!) tasks to complete within the next 2 weeks.

One action can have a tremendous impact, even if it's just planting a seed of an idea. The Kansas Breastfeeding Coalition is working together with you to prepare the soil and give you the tools to be successful.

We would love to hear what you did! Please share with Brenda Bandy at bbandy@ksbreastfeeding.org.

Please Join Us at the Next KBC Meeting

Friday, February 10, 2017
11:00am - 1:00 pm

Riley County Family and Child Resource Center (top floor conference room)
2101 Claflin Road, Manhattan KS 66502

To join by Zoom video conference:

<https://ksu.zoom.us/j/830404885>

Or Telephone:

Dial: +1 646 558 8656 (US Toll)
Meeting ID: 830 404 885



Member At Large
Becky Reid



Member At Large
Treva Smith



Member At Large
Stephanie Henry,



Past Chair
Michelle Sanders



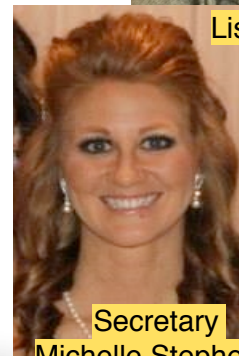
Chair
Jolynn Dowling



Chair-Elect
Brenda Moffitt



Treasurer
Lisette Jacobson



Secretary
Michelle Stephens



NEW “Breastfeeding Welcome Here” Tool Kit!

You asked for it! The new “Breastfeeding Welcome Here” (BWH) tool kit contains FAQs, enrollment form, infographics, poster for businesses and more - all in one convenient place.

[Download](#) the tool kit or print the pages you want. The BWH tool kit makes it easy to be prepared to talk with businesses about “how and why” of the BWH program.



Coalition & Advocate Toolkit

Creating communities where breastfeeding families feel welcomed!

This toolkit is intended to be a resource for local advocates who wish to create communities supportive of breastfeeding by reaching out to local businesses and public establishments.



Follow us on

To learn more about Kansas Breastfeeding Coalition's Breastfeeding Welcome Here campaign please visit www.ksbreastfeeding.org/cause/breastfeeding-welcome-here. This toolkit was adapted from the Michigan Breastfeeding Network's Anytime, Anywhere project materials.



Breastfeeding
is good
for everyone



English and Spanish Table Tents

Staff education poster

We Welcome Breastfeeding Mothers!

Breastfeeding is healthy for mom and baby. To support moms we will provide a welcoming environment in which mothers can breastfeed anywhere customers are allowed.

"How do I respond if a customer complains about a woman breastfeeding?"

It is important to validate concerns as well as educate. "I understand you are concerned, but our business complies with the Kansas law that protects women's right to breastfeed in public. As a breastfeeding-friendly business, we have pledged our support for breastfeeding families and will not ask a nursing mother to leave or cover up. What can I do to make you more comfortable? Is there another place you would like to be seated?"

(Note: Solutions will be different for different businesses.)

Find more information on the KBC website www.ksbreastfeeding.org/cause/breastfeeding-welcome-here

Kansas Breastfeeding Coalition, Inc.

Share the tool kit with partners, such as student nursing classes and others, who are interested in helping to enroll businesses. Share with us how you are using the new BWH tool kit - email Julie Fields at juliefieldslc@gmail.com.

School District Assessment Survey

The Kansas Breastfeeding Coalition, with support from KDHE Health Promotions, is conducting a state-wide survey of public school districts to determine the support they offer their breastfeeding employees. Surveys will be email to school superintendents in late February, with instructions to forward the survey to the HR staff or equivalent.

Please contact your school district the first week of March to ensure they received the survey and it's in the hands of the person most knowledgeable about policies and accommodations for breastfeeding employees district-wide.

We want to hear from every school district to get a clear picture of breastfeeding support for employees of Kansas public schools.

Kansas County Data

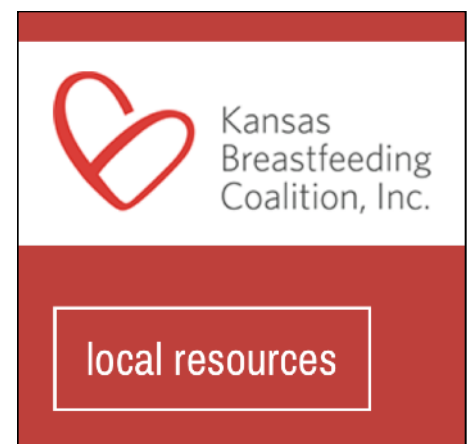
See how your county stacks up! *Check out the KBC's listing of 12 indicators of [breastfeeding support by county](#).* See how your county compares to counties of similar size, demographics or geographic region. If your county's information is not accurate, please let the KBC know by emailing Brenda Bandy at bbandy@ksbreastfeeding.org.

Help families find the breastfeeding support they need!

The KBC's "[Local Resource Directory](#)" is the perfect "one-stop" resource for families and others looking for local breastfeeding resources. Simply enter the zip code and the directory populates with breastfeeding resources.

This resource is only as good as the information the KBC has put in it. *Please check the resources that appear in your area to verify accuracy and completeness.* Contact Julie Fields, juliefieldslc@gmail.com to make a correction or add a new resource.

TIP: *Insert a QR code of the Local Resource Directory on your business card or resource listing* to help families find help when and where they need it.



Promote “*Breastfeeding Friendly...*” designations in your community

“Breastfeeding Friendly Physician’s Practice” designation - [promotional flyer](#). *Take to area doctor’s offices and encourage them to contact the Kansas Chapter of the AAP to enroll.* The KAAP does the rest! They provide a FREE 1-hr lunch-and-learn with CMEs. Local coalitions are invited to introduce themselves at the end of the lunch. For a listing of designated practices, visit <http://www.kansasaap.org/wordpress/chapter-focus/breastfeeding/kansas-breastfeeding-friendly-practices/>

“Breastfeeding Friendly Child Care Provider” designation - [promotional flyer](#). *Provide to your county child care licensing surveyor (electronic or hard copy) and ask them to send it out to child care providers in your area encouraging them to apply.*

Community Supporting Breastfeeding

Congratulations to Coffey County - the newest “[Community Supporting Breastfeeding](#).”

Coffey County achieved the “Community Supporting Breastfeeding” designation on Jan. 27th due to the work by the Coffey County Breastfeeding Coalition, which formed only last summer. It was a team effort, involving the hospital, health department, K-State Research & Extension staff, and a terrific Local Community Coordinator who kept everyone on track - Tina Withers!

Visit ksbreastfeeding.org/csb to view the complete list of communities who have achieved this designation.

Curious how your community can become the next “Community Supporting Breastfeeding”? The next page highlights a few concrete action steps for individuals or coalitions.



Kansas
Breastfeeding
Coalition, Inc.



CSB Criteria	<i>Action Steps</i>
Have a local breastfeeding coalition	<i>Contact Brenda Bandy to schedule a “coalition start-up meeting” in your community. Meeting invitation and agenda provided by KBC. And it’s FREE!</i>
Have a peer support group(s) such as La Leche League or similar mother-to-mother group	<i>Contact Brenda Bandy for ideas, including Facebook support groups models.</i>
A least one community hospital enrolled in High 5 for Mom & Baby or Baby Friendly Hospital USA	<i>Visit “Participating Hospitals” page of the High 5 for Mom & Baby website to see if your hospital is enrolled. Contact Gwen Whittit, coordinator@high5kansas.org , Program Coordinator for High 5 for Mom & Baby, to find out how to get your hospital enrolled.</i>
1 business for every 1000 community citizens* or 25 (whichever is lesser) participate in the “Breastfeeding Welcome Here” program	<i>Have your next breastfeeding coalition meeting downtown! Divide into pairs and divide up the surrounding area. Pairs walk to area businesses with the NEW BWH Tool Kit and enrollment forms ready to be signed. Reconvene after 45 minutes. The pair with the most enrolled businesses wins a prize! Talk with an instructor at the nursing school or community college in your area to see if they would make this a class project. Give them the BWH tool kit and offer to talk with their class about the program before the students go out to sign up businesses.</i>
1 business for every 5000 community citizens or 10 (whichever is lesser) receive a “Breastfeeding Employee Support Award”	<i>Email (using this letter as a template) employers you have heard are supportive of their breastfeeding employees, asking them to apply for the award Invite HR directors from your largest employers to a meeting with you and Brenda Bandy. Brenda will come to your community for FREE to meet with HR directors in your community, all in one day (or ½ day). Contact Brenda Bandy to schedule your day of fun!</i>
A minimum of 20 child care providers in the community completing the KBC’s <i>How to Support the Breastfeeding Mother and Family</i> course as provided by Kansas Child Care Training Opportunities	<i>Contact Brenda Bandy for a promotional flyer to give to your county child care licensing surveyor. Ask them to forward it to child care providers and encourage them to take the FREE course. Host an in-person 2-hour training for child care providers. Contact Brenda Bandy.</i>

“Breastfeeding 2017: Maternal Health and Breastfeeding

Success” - featuring Dr. Alison Stuebe, March 10th, Newton. Registration information <https://www.eventbrite.com/e/breastfeeding-2017-registration-29649331950>

Certified Lactation Counselor course - Oct. 30- Nov. 3, Manhattan.
[Registration Flyer](#)

Community Presentations By Request

Brenda Bandy spoke to the “First Friday Forum” in Ottawa Kansas to a group of city and county leaders. They were encouraged to integrate breastfeeding support throughout the community and given examples of what could be done. *Consider inviting Brenda Bandy to speak at your civic leadership gatherings, such as Chamber of Commerce, Economic Development, Business Roundtables, Young Professionals, etc...*

Read more about the Forum:
<http://www.ottawaherald.com>



Kansas
Breastfeeding
Coalition, Inc.

WHAT'S HAPPENING IN YOUR COMMUNITY?

We want to highlight your success! Please send photos, success stories or other testimonies to bbandy@ksbreastfeeding.org. Submissions may be used on our website, Facebook or included in the KBC Update.

Facebook: [Kansas Breastfeeding Coalition](#)

Website: www.ksbreastfeeding.org