



Kansas
Breastfeeding
Coalition, Inc.

General Meeting

Aug. 13, 2021



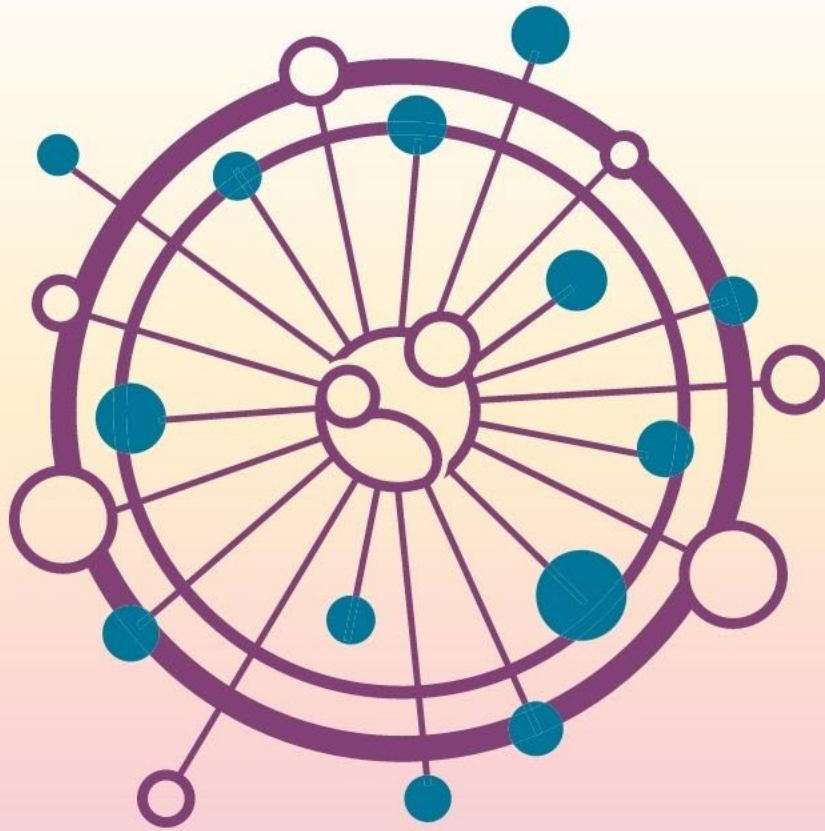
Kansas
Breastfeeding
Coalition, Inc.

Welcome!

Please enter your name and city in the “Chat” box”
This meeting is being recorded.

KBC Mission: To improve the health and well-being of Kansans by working collaboratively to promote, protect and support breastfeeding.

KBC Vision: Breastfeeding is normal and supported throughout Kansas.



EVERY STEP OF THE WAY

National Breastfeeding Month 2021



USBC
U.S. Breastfeeding Committee



Kansas
Breastfeeding
Coalition, Inc.

World Breastfeeding Week

Aug. 1-7



Kansas
Breastfeeding
Coalition, Inc.

Indigenous Milk Medicine Week

Aug. 8-14

Indigenous Milk Medicine Week, August 8-14, 2021

“WHEN WE FRAME BREASTFEEDING NOT AS A FEEDING CHOICE, BUT A CULTURAL OR TRADITIONAL PRACTICE, WE ARE FORCED TO LOOK AT THE IMPACT OF COLONIALISM AND ITS ROLE IN THE LOSS OF BREASTFEEDING IN INDIGENOUS COMMUNITIES. WHEN INDIGENOUS PEOPLE BREASTFEED THEIR BABIES THEY ARE RECLAIMING THEIR TRADITIONAL PRACTICES, WHICH NOT ONLY HAS THE POWER TO CHANGE THE LIFE COURSE OF FUTURE GENERATIONS, BUT HEAL THOSE THAT CAME BEFORE US.”

CAMIE GOLDHAMMER, CSW, IBCLC



Breastfeeding USA

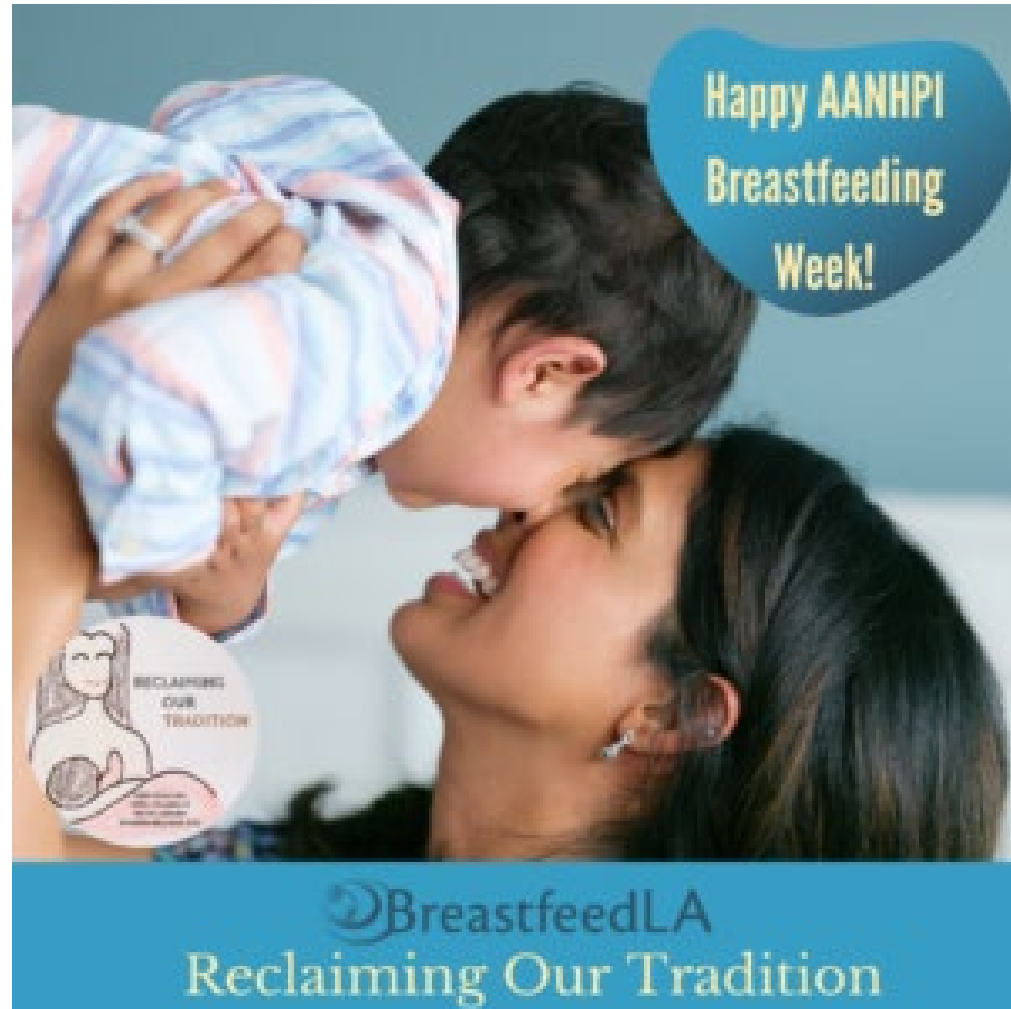


INDIGENOUS
MILK MEDICINE
COLLECTIVE



Kansas
Breastfeeding
Coalition, Inc.

Asian American, Native Hawaiian, and Pacific Islander (AANHPI) Breastfeeding Week Aug. 15-21



Black Breastfeeding Week

Aug. 25-31



Kansas
Breastfeeding
Coalition, Inc.

Governor Laura Kelly Proclaims August “National Breastfeeding Month” in Kansas

STATE OF KANSAS



PROCLAMATION BY THE GOVERNOR

TO THE PEOPLE OF KANSAS, GREETINGS:

WHEREAS, the mission of the Kansas Breastfeeding Coalition (KBC) is to improve the state's health by working collaboratively to protect, promote, and support breastfeeding; and

WHEREAS, the mission of the Kansas Department of Health and Environment (KDHE) is to protect and improve the health and environment of all Kansans; and

WHEREAS, KBC and KDHE envision breastfeeding as the norm for infant and young child feeding throughout Kansas; and

WHEREAS, breast milk is the preferred and most appropriate source of nutrition for infants, adapting over time to meet the changing needs of the growing infant; and

WHEREAS breastfeeding is a proven primary prevention strategy, protecting both infants and mothers from a host of chronic and acute diseases and conditions and building a foundation for life-long health and wellness; and

WHEREAS the act of breastfeeding builds a strong emotional connection between the mother and infant, a bond that lasts a lifetime; and

WHEREAS, breastfeeding provides a safe, reliable, and renewable food source, especially critical during a natural disaster and emergency situations; and

WHEREAS, employers that provide workplace lactation support experience an impressive return on investment, including lower health care costs, absenteeism, and turnover rates, and improved morale, job satisfaction, and productivity; and

WHEREAS, all major medical authorities recommend that mothers breastfeed exclusively for six months and continue breastfeeding for at least the first year of a child's life, yet breastfeeding rates continue to decline after the early weeks; and

WHEREAS, U.S. Surgeon General Regina Benjamin has issued The Surgeon General's Call to Action to Support Breastfeeding, calling on health care providers, employers, insurers, policymakers, researchers, and the community at large to support mothers in reaching their personal breastfeeding goals.

NOW, THEREFORE, I, Laura Kelly, GOVERNOR OF THE STATE OF KANSAS, do hereby proclaim August 2021 as

National Breastfeeding Month

in Kansas and I urge all citizens to join in this observation.

DONE: At the Capitol in Topeka
under the Great Seal of
the State this 1st day of
August, A.D. 2021



BY THE GOVERNOR:

Laura Kelly

Secretary of State

Assistant Secretary of State



NEW Breastfeeding Rates in Kansas

August 2, 2021

Just released - breastfeeding data from the [National Immunization Survey for babies born in 2018](#).

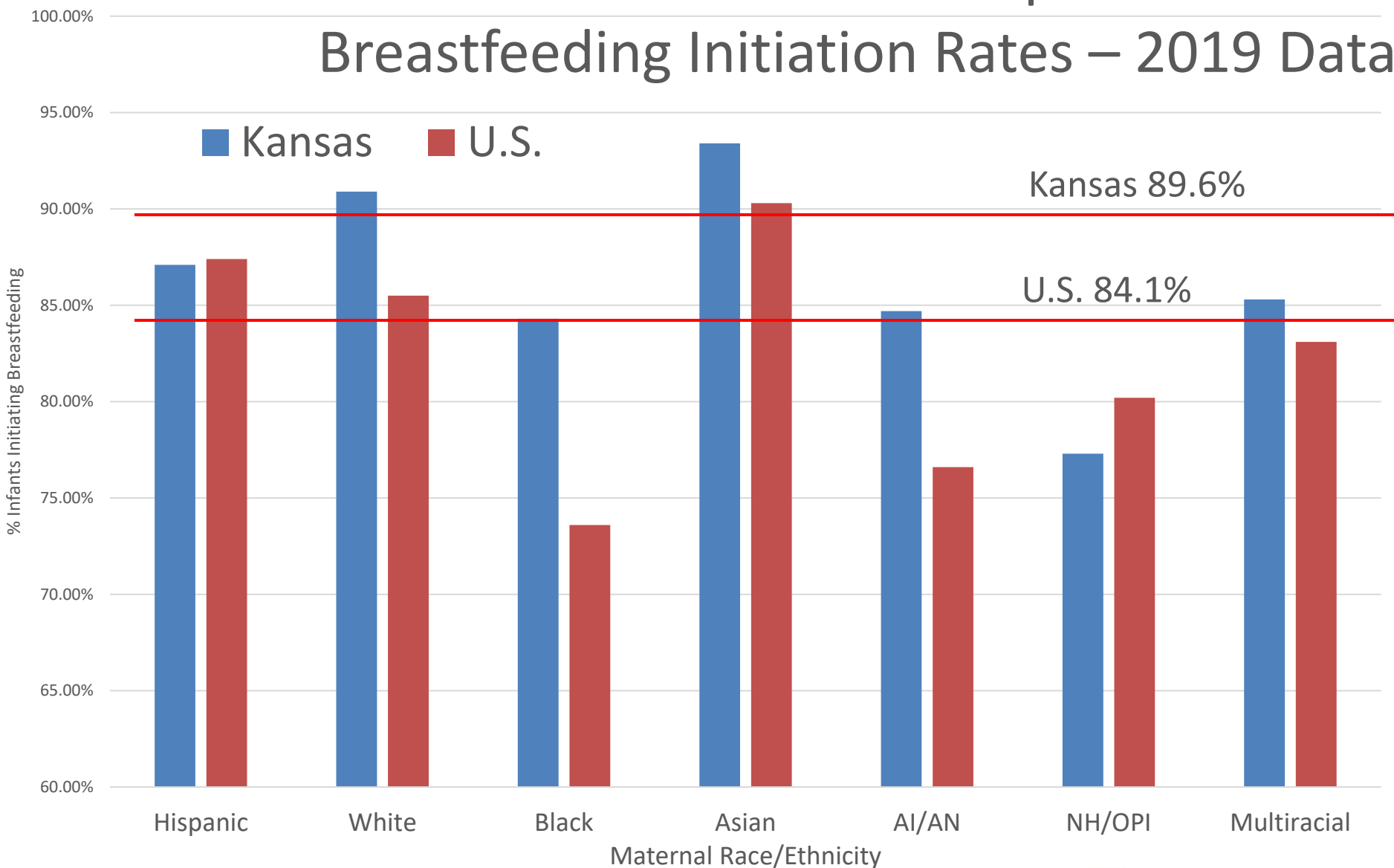
Kansas exceeds the national average in *all measures* - for the first time!

Kansas now ranks 9th in the nation for rates of infants exclusively breastfeeding at 6 months.

Kansas now ranks in the TOP 15 of states with high rates of both initiation of breastfeeding (12th) and breastfeeding at 12 months (15th).

	% Initiation (Ranking)	% Exclusive Breastfeeding at 6 mos. (Ranking)	% Breastfeeding at 12 mos. (Ranking)
U.S. 2018	83.9	25.8	35.0
KS 2018	87.9 (12 th)	32.0 (9 th)	38.5 (15 th)
KS 2017	84.6 (26 th)	31.6 (10 th)	37.2 (25 th)
KS 2016	88.0 (14 th)	31.4 (11 th)	34.6 (29 th)
KS 2015	83.6 (24 th)	26.1 (27 th)	36.5 (24 th)
KS 2014	77.1 (38 th)	24.5 (27 th)	31.0 (32 nd)
KS 2013	83.8 (20 th)	23.4 (27 th)	32.4 (24 th)
KS 2012	84.4 (14 th)	24.5 (14 th)	23.1 (37 th)
KS 2011	77.4	11.4	22.5
KS 2010	72.9	15.1	27.3

Racial and Ethnic Inequities in Breastfeeding Initiation Rates – 2019 Data



Abbreviations: AI/AN = American Indian/Alaska Native; NH/OPI = Native Hawaiian/Other Pacific Islander

Source: Chiang, K., Li, R., Anstey, E., et al., Racial and Ethnic Disparities in Breastfeeding Initiation — United States, 2019. MMWR Morb Mortal Wkly Rep 2021;70:1-6.

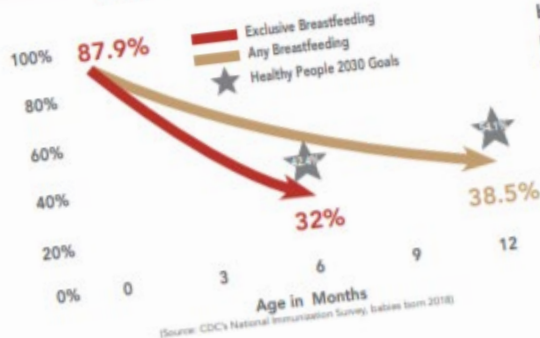


Kansas
Breastfeeding
Coalition, Inc.

The State of Breastfeeding in Kansas



The Cost of Low Breastfeeding Rates in Kansas is **HIGH**



Kansas now ranks 9th in the nation for rates of infants exclusively breastfeeding at 6 months.

ksbreastfeeding.org

If 90% of Kansas babies breastfed exclusively for six months, each year Kansas would save...

\$27 Million medical costs

22 Maternal deaths

7 Infant deaths

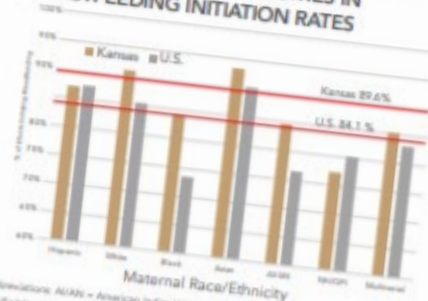
(Source: Breastfeeding Saves Lives Calculator, www.breastfeeding.saveslivescalculator.org, July 2021)



Kansas Breastfeeding Coalition, Inc.

Not all families have the same choices

RACIAL AND ETHNIC INEQUITIES IN BREASTFEEDING INITIATION RATES



BREASTFEEDING INITIATION BY COUNTY OF RESIDENCE IN KANSAS 2017-2019*



What allows some families to be able to choose to breastfeed?



KANSAS RANKS 8TH IN NATION!
 51.5% of babies are born in baby-friendly hospitals compared to 29.1% nationally



(Source: Centers for Disease Control and Prevention: National Center for Chronic Disease Prevention and Health Promotion, Division of Fieldwork, Physical Activity, and Obesity Data, Trends and Maps (online). Accessed May 27, 2021. URL: <https://www.cdc.gov/nccd/data/index.html#data/2020/physical-activity-and-obesity>)

Employer Support: Accommodating Breastfeeding Employees

Increase employee retention, lower health care costs, and reduce absenteeism—with one simple, well-timed statement! Sharing “We have a lactation support program, should you need it, for when you return after the birth of your baby” with employees before they go out on maternity can increase employee retention by 50%. Timing is everything!

With 9 out of 10 pregnant women choosing breastfeeding, they will be relieved to hear their employer supports their decision. Employees and job candidates are looking for family-friendly workplaces. Several studies have found employers who support their breastfeeding employees benefit from^{1,2,3}:

- Reduced employee turnover
- Enhanced public image of the employer
- Decreased absenteeism



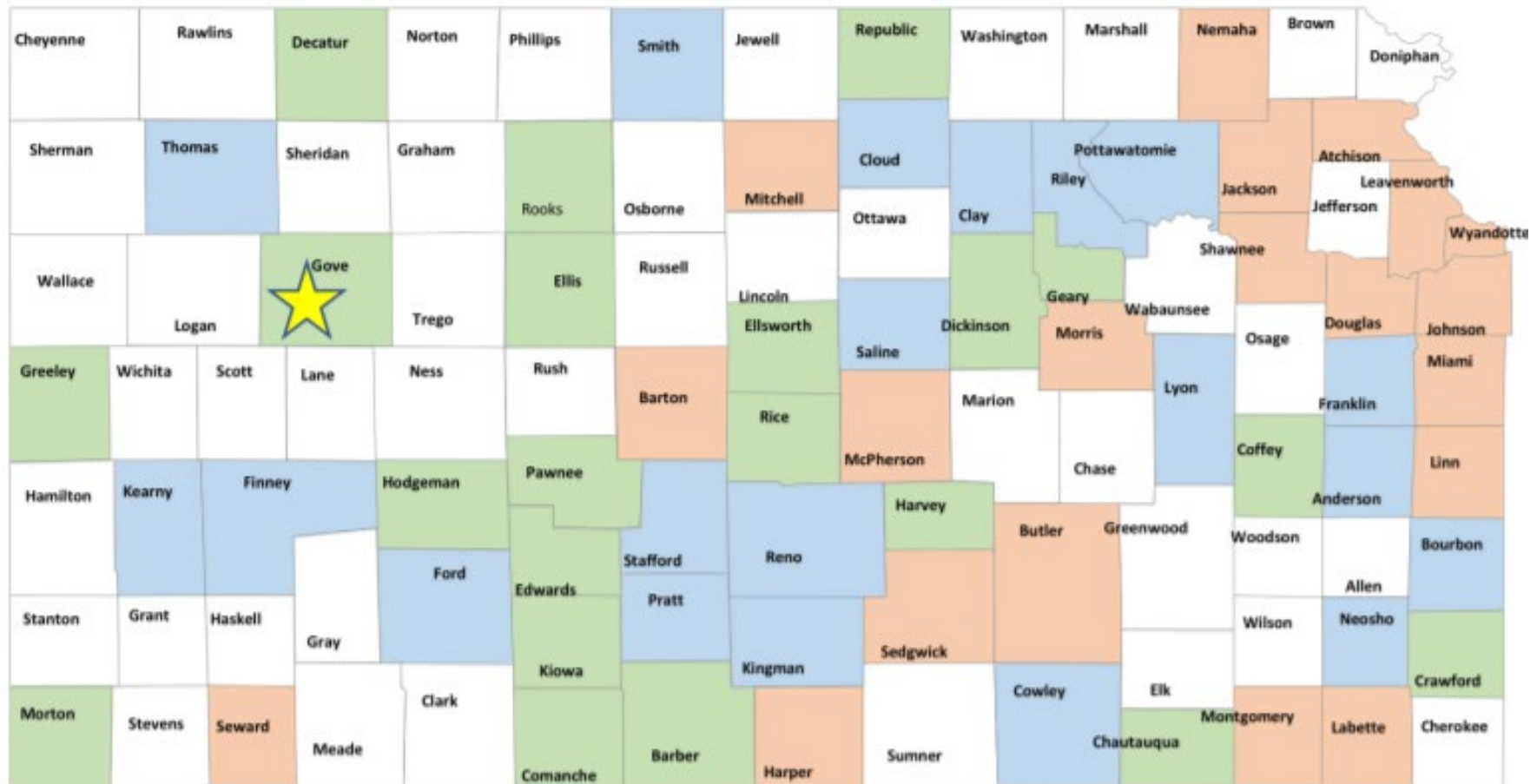
Survey of Kansas Employers*

Practice	Kansas Employers	You?
Policy —Written Lactation Accommodation Policy, in employee handbook	44%	<input type="checkbox"/>
Space —Lactation Room used only for the purpose of pumping breast milk	34%	<input type="checkbox"/>
Time —Employee can pump breast milk as the need arises (not limited to break/meal times)	84%	<input type="checkbox"/>
Communication —Discuss the company’s lactation policy prior to the employee’s maternity leave	48%	<input type="checkbox"/>
Paid Maternity Leave —in addition to vacation/sick/PTO, etc. (includes leave for non-parental care)	5%	<input type="checkbox"/>

*2021 Employer Survey. 154 employers responded

"Breastfeeding Employee Support Award" Employer Awards

Breastfeeding Employee Support Awards by County



of awards/10,000 people

No awards

0.1-1.9

2-2.9

>3



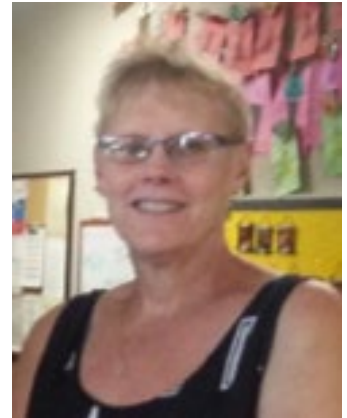
Most awards/10,000 people



Member Section Updates

KBC Child Care Section

- A group was convened to discuss the possibility of completed a research project to determine the current breastfeeding perceptions of child care programs in Kansas.
- Pennsylvania received permission to adapt the Kansas *Breastfeeding Friendly Child Care Toolkit*.
- The toolkit was referenced as a resource in the New Jersey report titled "[Breastfeeding Babies Are Welcome Here: Creating Breastfeeding-Friendly Child Care in New Jersey.](#)"
- The toolkit was referenced in a Nemour's Children's Health System technical assistance brief on [How Child Care Stabilization Grants Can Improve Healthy Eating and Physical Activity](#)
- The Section provided in put on the KBC *Checklist: Early Childhood Systems Support for Breastfeeding* that was shared with Early Childhood Recommendations Panel.
- Child Care Aware® of Kansas is promoting the Breastfeeding Friendly Child Care Designation by offering Amazon gift cards for the first 30 approved applications.



Kris Nicholson, Chair

Meetings from 12-1 PM on 2nd Wed. of odd # months



Kansas
Breastfeeding
Coalition, Inc.

KBC Hospital Section

Discussion Topics:

- Perinatal Core Measure (PC) 05 Exclusive Breastfeeding upon Discharge (The Joint Commission)
- NEW High 5 for Mom & Baby “Practice Sheets” & Education Modules
- NEW mPINC Ten Steps Assessment Tool
- Kansas hospitals pursuing the “Baby-Friendly” designation – status updates & support

Next meeting Sept. 23rd. Meetings from 12-1 PM on 4th Thursday of odd # months



Dana Deters, Chair



Kansas
Breastfeeding
Coalition, Inc.

KBC Local Coalitions Section

- We met on May 13th & July 8th.
- Carmen Valverde shared about the NEW Lactancia Latina of SW KS & Jennie Toland shared the journey of the Ford County Breastfeeding Coalition (*recording of Jennie's presentation on the Tools for Coalition page*).
- Members shared what was happening in their Coalitions, as we helped each other.
- We were reminded of the Lactation Education Support grant availability.
- We provided input to the NEW Employer Report to help coalitions work with area employers. (*on Resources page*)
- Our next meeting will be Thursday September 16th from 12p-1pm, featuring returning champion speaker - Greg Meissen



Susan Lukwago, Chair

KBC Public Health Section

- The Public Health Section worked hard in the month of June to complete the [Employer Report](#). The report is targeted to HR and Executives to help them support and accommodate breastfeeding employees. The report launched along with the State of Breastfeeding Report the first part of August.



Danielle Ast, Chair
Danielle.ast@wichita.edu

- “Learning Moments” from:
 - Kansas Cancer Partnership (Aug.)
 - Ks Local Health Departments (Oct.)
 - Kansas Healthy People 2030 (Dec.)
 - Kansas Actin for Children (Dec.)

Please reach out to Danielle.Ast@wichita.edu if you have any questions.



Kansas
Breastfeeding
Coalition, Inc.

KBC Community Supporting Breastfeeding Section

Began meeting in June 2021.

Goal: To support communities to achieve the Community Supporting Breastfeeding Designation (original and Plus).

The July meeting focused on the *Breastfeeding Welcome Here* criteria. Future meetings will look at other criteria.

The Section plans to create short videos with tips and tools for each of the criteria.

Meetings from 1-2 PM on the 3rd Monday of each month.



Janet Colson,
Chair

Janet.colson@modernlactation.com



Kansas
Breastfeeding
Coalition, Inc.

LATCHED *Legacy*

Take the quick survey to get a
FREE Breastfeeding Kit!
For Black identifying parents



SCAN ME

A project of...

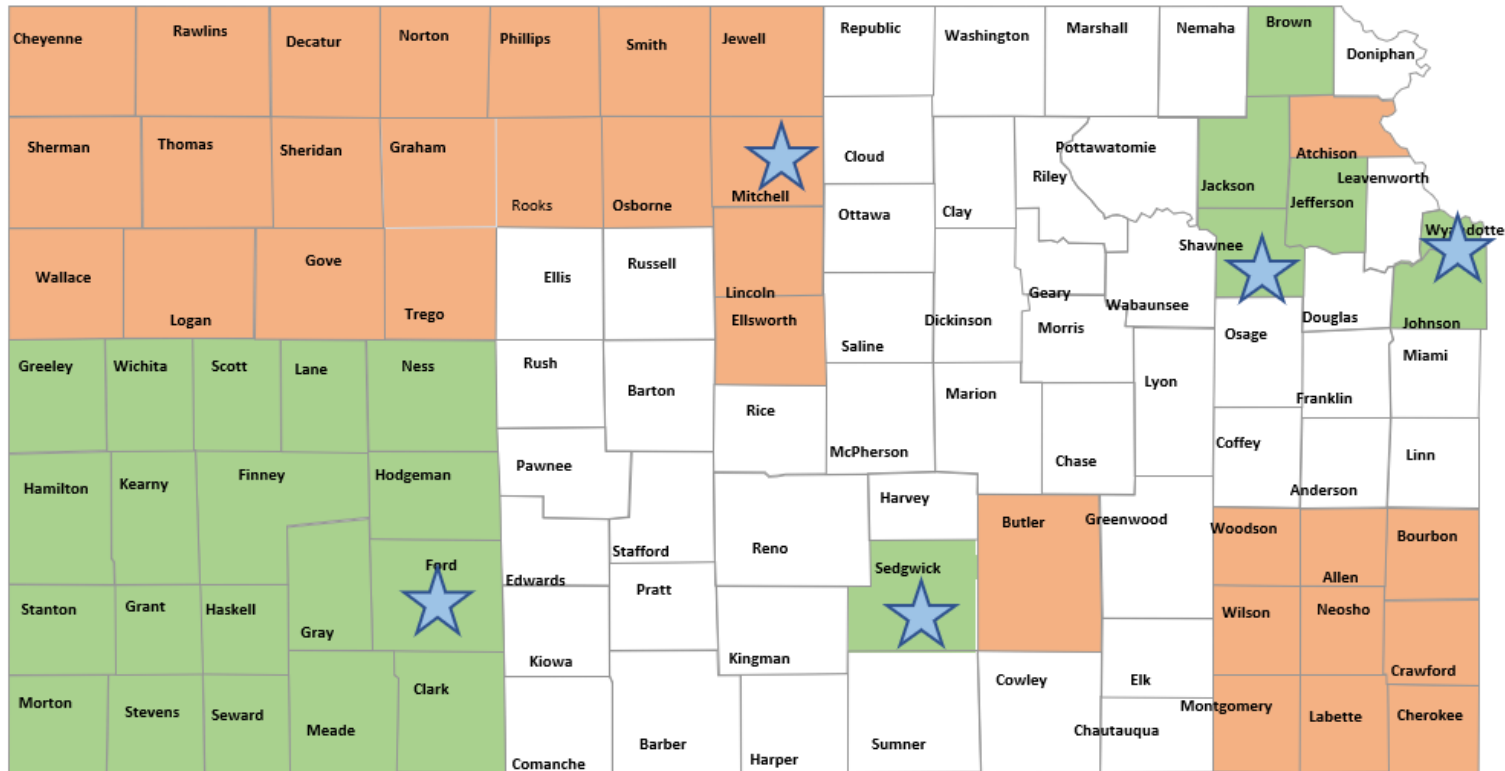


Joyea Marshall
Local Coordinator
Wichita Black Breastfeeding
Coalition



Kansas
Breastfeeding
Coalition, Inc.

2022 “One Big Idea” Communities & other communities receiving support:



UMHMF YR 3

KDHE

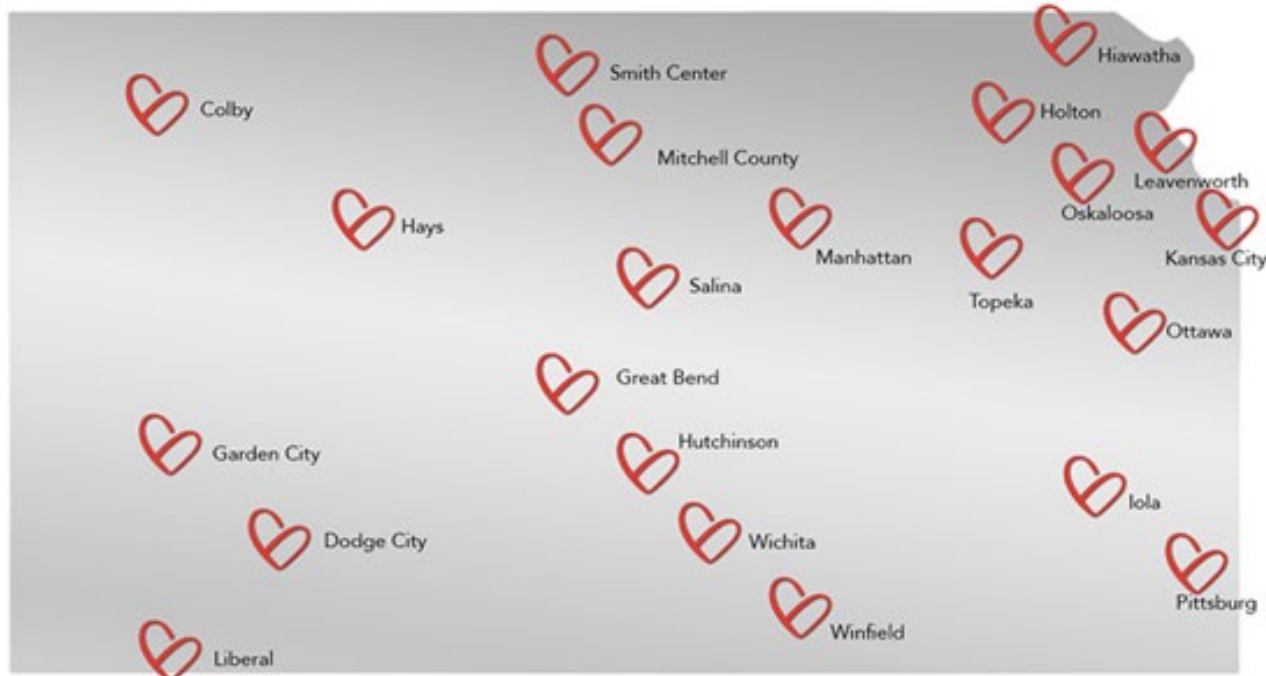


KBC Capacity Grant



Kansas
Breastfeeding
Coalition, Inc.

First 1,000 Days Kansas Road Trip



13 days

42 meals

109 people

2,426 miles



Kansas
Breastfeeding
Coalition, Inc.

What We Heard

- **Prenatal through 6 weeks** is an important period
- Kansans need **paid family leave**
- Families have **too many barriers** to accessing support
- **KanCare coverage** must align with what moms and babies need
- The **dedicated individuals** of KS are our biggest asset

[http://
first1000daysks.
org/](http://first1000daysks.org/)

Join Us To Find Solutions



WANT TO BE A LACTATION CONSULTANT IN KANSAS? WE CAN HELP!



Color-Filled Breastfeeding
**Clinical Lactation
Training Program**

A Program of



Kansas
Breastfeeding
Coalition, Inc.

Join us online

September 16th, 2021 from 6-7 PM CT

to learn more about becoming a student
in this new program!

Register at <https://bit.ly/3xsjDVh>

Congratulations!!

In alignment with the Kansas Breastfeeding Coalition's commitment to addressing [racial disparities in breastfeeding](#), the Kansas Breastfeeding Coalition (KBC) awarded **\$4,000** in scholarships to support four aspiring Latina and Black lactation support providers.

Scholarship recipients are from Topeka (2), Wichita (1) and Dodge City (1).

Funding for scholarships come from KBC classes, conference and generous donors like you!

Donate through the KBC website

Chocolate MILK CAFÉ NATIONAL

NEW Chapters in:

- Kansas City (*in addition to Uzazi Village*)
- Topeka
- Wichita

Meeting online through 2021. Details here -
<https://www.chocolatemilkcafe.com/meetings>



Kansas
Breastfeeding
Coalition, Inc.



More News!

- Needs Assessment in Southwest Kansas – Carmen Valverde
- Community Supporting Breastfeeding “Plus” designation



- **Kansas Indigenous Breastfeeding Coalition –**
Stephanne Rupnicki
- **Breastfeeding Friendly Health Department Designation –** Danielle Ast
- **Spanish Language Materials –**
Carmen Valverde

- **“Obstetrical Racism: Birth and Breastfeeding Trauma”**
webinar – Aug. 25, 12-1 pm, speaker: Hakima Payne
- **2021 Breastfeeding Conference (*online*):**
 - Oct. 14-15, Community Engagement (FREE!)
 - Oct. 28-29, Hot Topics in Lactation
 - 8 am – 12 pm all days
 - Up to 12 hours of continuing education!
 - Registration at <https://ksbreastfeeding.org/2021-kansas-breastfeeding-conference/>
- **KBC General Meeting** - December 3, 12 – 1 pm



Breastfeeding Courses

Breastfeeding 101: The Basics

- Core concepts of lactation
- Aug. 26 & Dec. 9, 2021, 8:00 am – 12:00 pm \$59

Breastfeeding 201: Building on the Basics

- Intermediate concepts
- Aug. 26-27 & Dec. 9-10, 2021, 1:00 – 5:00 pm
- \$110

Continuing Education for nurses, dietitians and lactation support providers (CERPs).

Details & registration at <https://ksbreastfeeding.org/our-work/breastfeeding-education-courses/>



Kansas
Breastfeeding
Coalition, Inc.

QUESTIONS?

Brenda Bandy, IBCLC

bbandy@ksbreastfeeding.org

Treva Smith, CHW, CBS

treva@ksbreastfeeding.org



Funding for the KBC is provided by:

- **Generous donors like you!** Donate [HERE](#) ->
- Kansas Health Foundation
- United Methodist Health Ministry Fund
- Kansas Department of Health and Environment with funding through the Health Resources and Services Administration (HRSA) of the U.S. Department of Health and Human Services (HHS) under the Maternal and Child Health Service Block Grant [Award B04MC28100; CFDA 93.994] and U.S. Department of Agriculture under the Nutrition and WIC Services contract [CFDA No. 10.557]



Kansas
Breastfeeding
Coalition, Inc.



**Share
your
thoughts**

We're
listening

Breastfeeding in Kansas

- What are the bright spots for breastfeeding families in your community?
- What are the challenges for breastfeeding families in your community?
- What is the Kansas Breastfeeding Coalition doing well?
- What could the Kansas Breastfeeding Coalition be doing better?

<https://www.surveymonkey.com/r/ThoughtsBreastfeeding>



Kansas
Breastfeeding
Coalition, Inc.

Get Social with the KBC!



KSBreastfeeding – *NEW on Instagram!!*



@KSBreastfeeding



KSBreastfeeding



Kansas
Breastfeeding
Coalition, Inc.