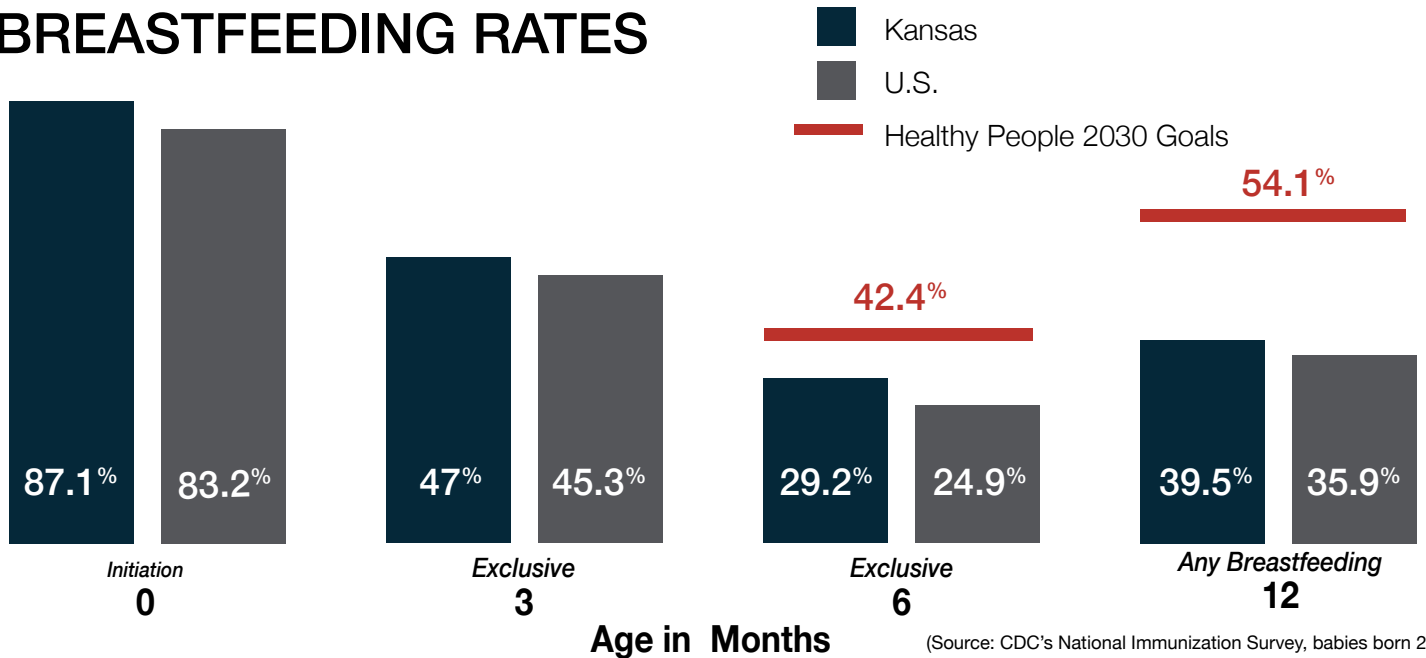


THE 2022 STATE OF BREASTFEEDING IN KANSAS



BREASTFEEDING RATES



Kansas ranks 14th in the nation for rates of infants exclusively breastfeeding at 6 months.

If 90% of Kansas babies breastfed exclusively for six months, each year Kansas would save...



\$27 Million
medical
costs



22
Maternal
deaths



7
Infant
deaths

WHAT CAN BE DONE?



ADVOCACY



EDUCATION



COALITION BUILDING



NEW RESOURCES

- [Spanish Language resources](#)
- [COVID-19 Vaccine and Breastfeeding](#)
- [First 1,000 Days Kansas Advocacy program](#)
- [Equity Data & Resources](#)
- [Breastfeeding courses](#)
- [Breastfeeding Friendly Child Care Provider Toolkit](#)
- [Toolkit for Kansas Local Breastfeeding Coalitions](#)
- [Breastfeeding Friendly Self-Assessment](#)

For a complete list of KBC resources, visit ksbreastfeeding.org.

BREASTFEEDING-FRIENDLY AWARDS

- [Employers](#)
- [Physician practices](#)
- [Child Care providers](#)
- [Local Health Departments](#)

ACTION IDEAS

- Use a new resource to support breastfeeding (see list on the left)
- Achieve a Breastfeeding Friendly Award (see list on the left)
- Join or form a [local breastfeeding coalition](#)
- Attend [breastfeeding education opportunities](#)
- Participate in a [KBC Section](#)
- Support [family-friendly policies](#)

“Everyone can help make breastfeeding easier.”

—Dr. Regina Benjamin, U.S. Surgeon General, 2011

Your donation helps support our work to create a landscape of breastfeeding support. [Donate HERE.](#)



Kansas
Breastfeeding
Coalition, Inc.

Publication date: 08/2022



The KBC welcomes and encourages participation from anyone who is interested in breastfeeding advocacy in Kansas. Find out more at ksbreastfeeding.org or email info@ksbreastfeeding.org.